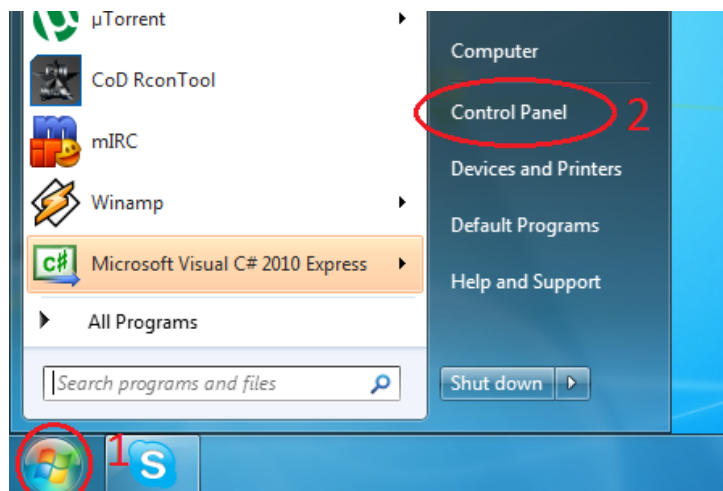


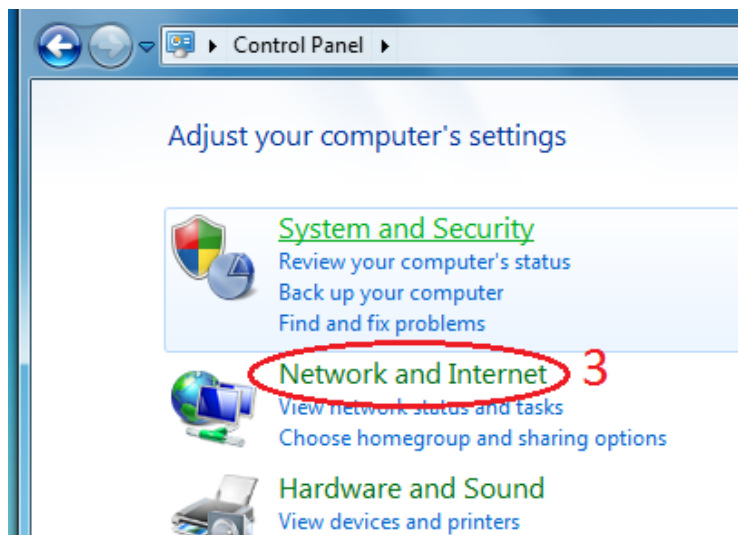
PODEŠAVANJE IP ADRESA NA AUTOMATSKO W7

Savjet za korisnike da printaju ili snime ovaj dokument na svoj racunar.

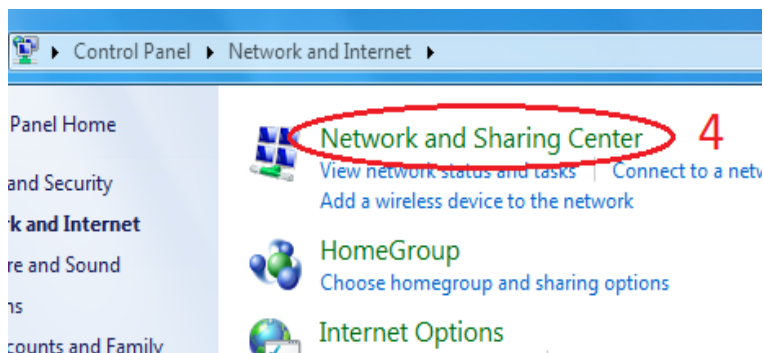
Kliknete na **Start** (1) i iz menija odaberete **Control Panel** (2).



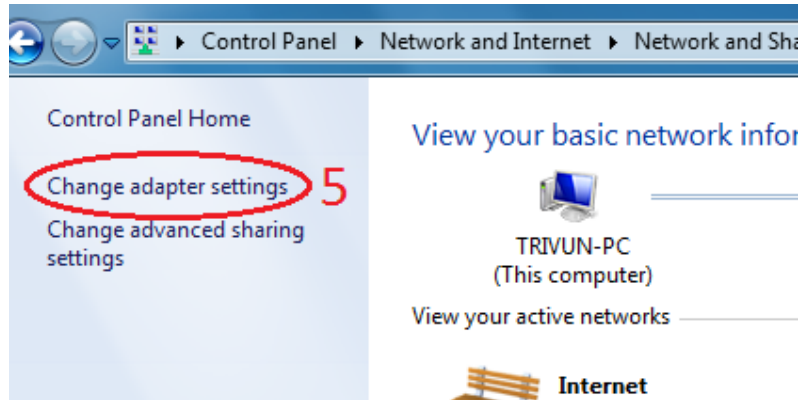
Nakon što vam se otvori prozor Control Panel kliknete na **Network and Internet** (3).



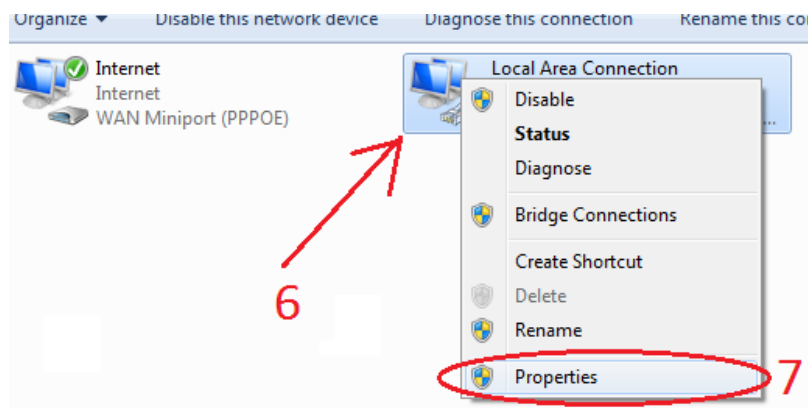
Zatim klik na **Network and Sharing Center** (4).



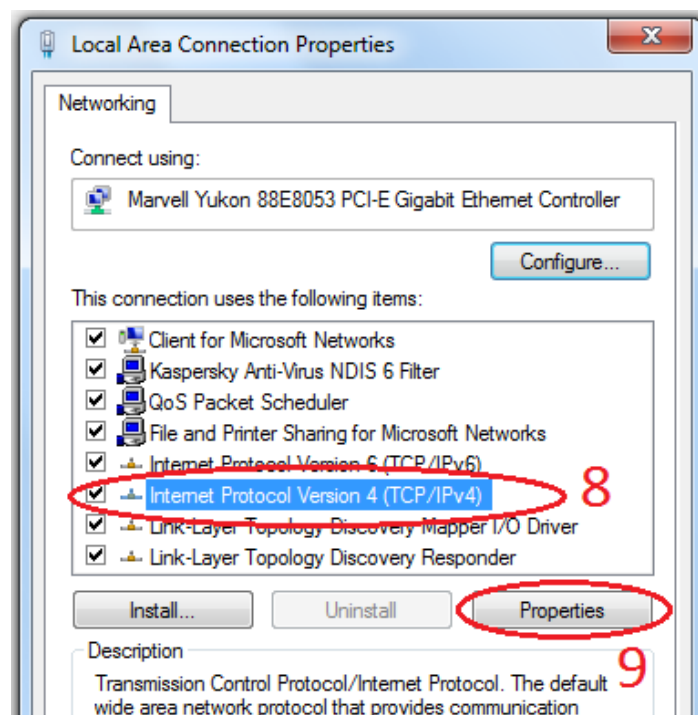
Sa lijevog panela odaberete opciju **Change adapter settings** (5).



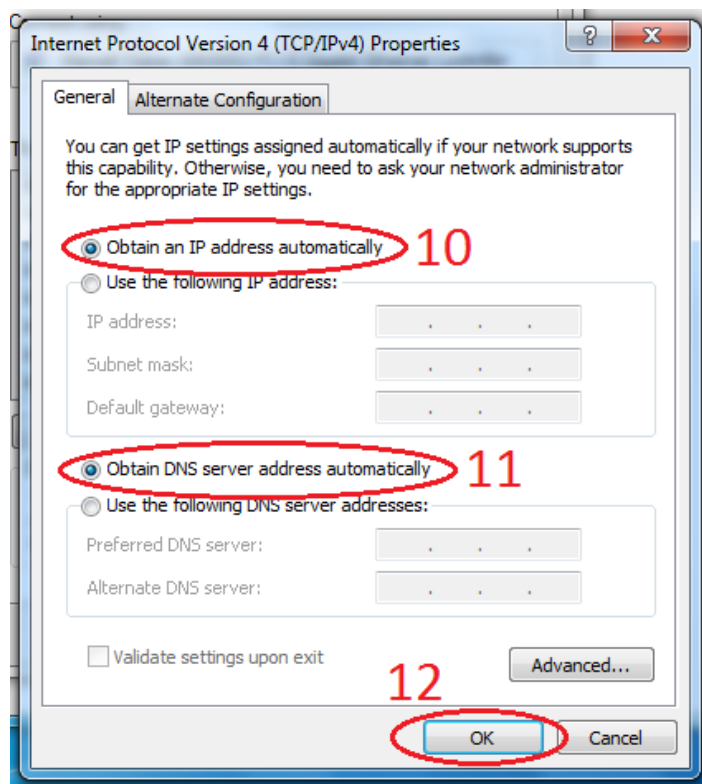
U novom prozoru kliknete desnim tasterom na ikonicu **Local Area Connection** (6) i iz padajućeg menija izaberete opciju **Properties** (7).



U novodobijenom prozoru označite **Internet Protocol Version 4 (TCP/IPv4)** (8) i kliknite na **Properties** (9).



Zatim čekirajte opcije **Obtain an IP address automatically** (10) i **Obtain DNS server address automatically** (11) i potvrdite na **OK** (12).



Uzмите паузу, заслужили сте I nakon toga uživajte u prednostima internet tehnologija.